

EVUSEP



**Sample loading of Evotips
700g mode**

Required Material

1. Box of Evtips
2. Mass spec grade 1-propanol, alternatively 2-propanol
3. Solvent A: Mass Spec Grade Water with 0.1% Formic Acid, JT Baker P/N: JT-9834-2 or equivalent
4. Solvent B: Mass Spec Grade Acetonitrile with 0.1% Formic Acid, JT Baker P/N: JT-9832-2 or equivalent
5. Multichannel pipette
6. Solvent containers for multichannel pipette
7. 96 well Microtiter plate (MTP), e.g. 249946, 96 well Conical Btm PP Plt Natural from Thermo, www.thermofisher.com/order/catalog/product/249943
8. Evtip adapter rack
9. Gloves
10. Table centrifuge
11. Fume hood

IMPORTANT INFO

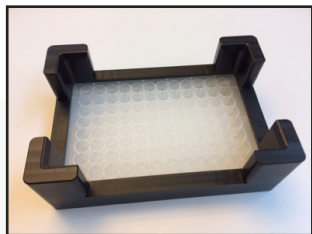
At all centrifugation steps use max acceleration and de-acceleration

After all centrifugation steps, empty the box for solvent

Please note that following settings are guidelines, adjustment might be needed depending on centrifuge.

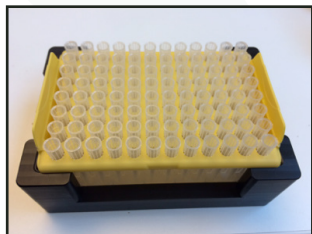
Wear safety glasses, coat and gloves and work in fume hood when following this procedure.

1. **Pour Solvent A and Solvent B into their respective solvent containers.**
2. **Pipette 100 μ l of 1-propanol into each well of a 96 well plate MTP using the multichannel pipette.**
3. **Place the Evtip adaptor rack on top of the MTP**

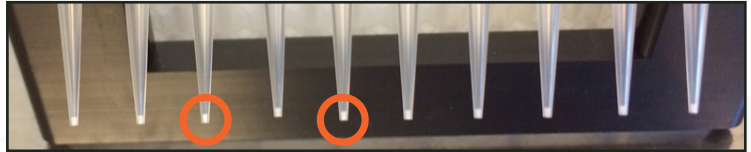
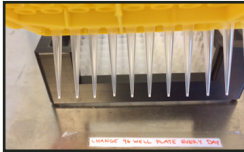



Condition / wash

1. **Place the Yellow rack of the Evtip box including the tips onto the adaptor rack so the tips are soaked in 1-propanol in the wells.**
2. **Soak for a minimum of 10 seconds and then visually inspect that tips are pale white**



Let the tips soak until all are pale white



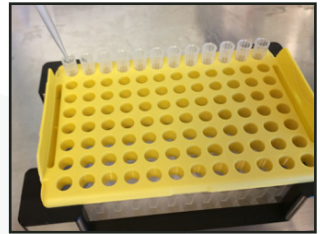
 *Not pale white*

Pale white vs white

This step might take
up 30-60 seconds

Wash after conditioning

Transfer 20 μ l Solvent B to all Evtips

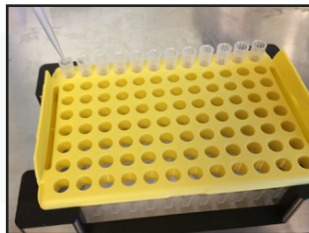


Place the Evtips in the centrifuge with appropriate counter balance and centrifuge 700g for 60 seconds



Equilibrate

Place the Evtips for soaking in the MTP with 1-propanol. Soak until all Evtips are pale white and then transfer 20 μ l Solvent A to each Evtip



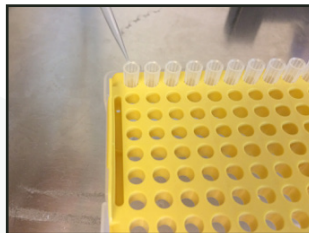
Place the Evtips in the centrifuge with appropriate counter balance and centrifuge 700g for 60 seconds



Sample load

Place the tips in the original tray and transfer the sample (20 μ l) to each Eivotip

Do NOT place the tips in the 1-propanol adaptor at this stage!

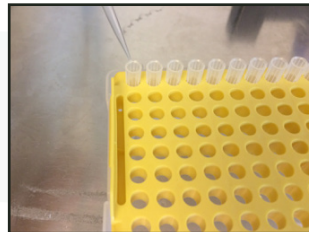


Place the Eivotips in the centrifuge with appropriate counter balance and centrifuge 700g for 60 seconds



Wash after loading

Transfer 20 μ l Solvent A to each EvoTip

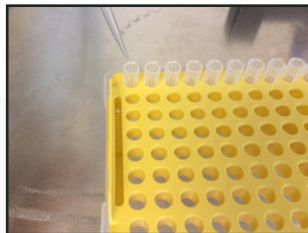


Place the EvoTips in the centrifuge with appropriate counter balance and centrifuge 700g for 60 seconds



Storage

Transfer 100 μ l Solvent A to each Evtip



Place the Evtips in the centrifuge with appropriate counter balance and centrifuge 700g for 20 seconds



Own notes





EVOSEP

Making clinical proteomics
100 times more robust
and 10 times faster

© 2018 Evosep. All rights reserved. Specifications,
terms and pricing are subject to change. Not all
products are available in all countries. Please consult
your local sales representative for details.