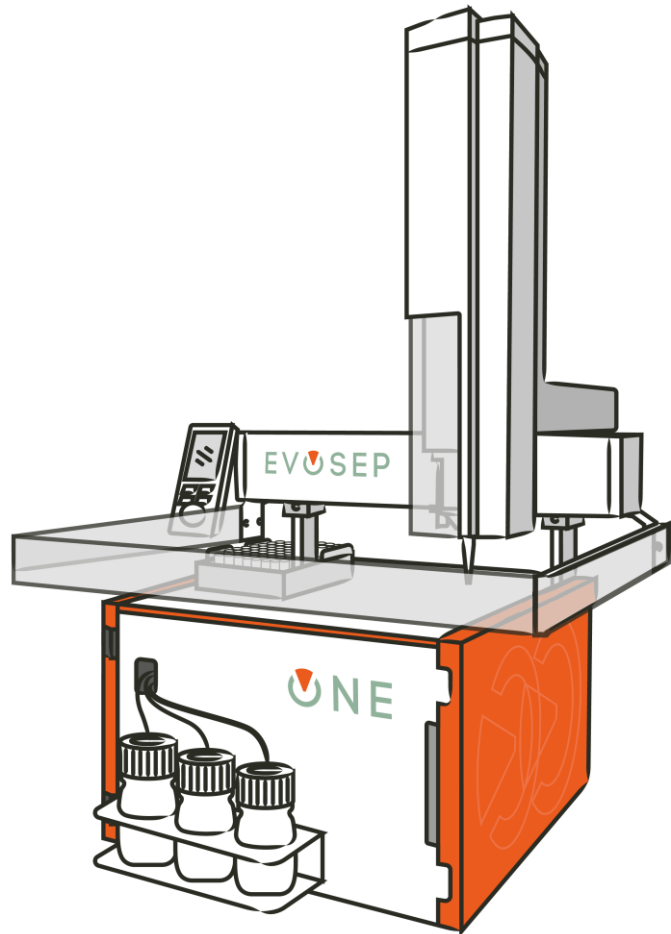


**EV****SE****P**

**Evosep One HW Compatibility Guide**

# HW Compatibility Guide



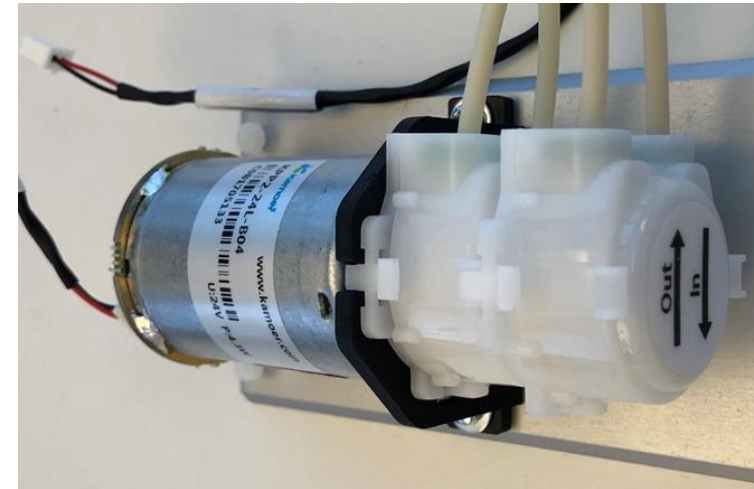
- We try very hard to limit hardware changes to the Evosep One system
- But from time to time components become obsolete or improvements become necessary
- This document will guide you to choose the correct spare parts should the need arise

# Drain pump(s)

- EV1051 (2 in each system)
  - EV1041 Waste tubing
  - EV1093 Drain pump filter



- EV1097 (1 in each system)
  - EV1105 Waste tubing for peristaltic pump



# Low pressure flow sensor

- EV1015, flat bottom (bigger tan/beige fittings)

- EV1023 Valve 12 to Flow-sensor LP
- EV1026 A,B flow-sensor to Needle Tee
- EV1027 C,D flow-sensor to Tip cross



- EV1100, coned bottom (smaller black fittings)

- EV1103 Valve 12 to Flow-sensor LP
- EV1101 A,B flow-sensor to Needle Tee
- EV1102 C,D flow-sensor to Tip cross



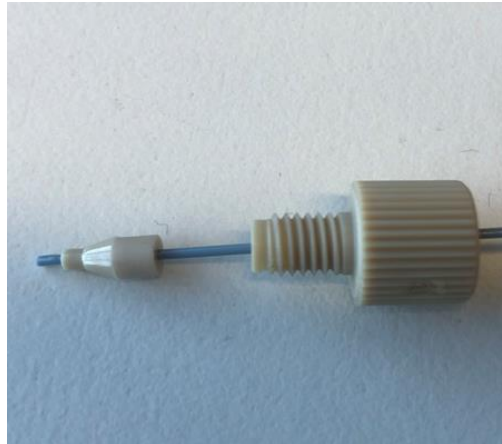
# Steel tubing

- EV1098 HP pump to HP pressure sensor
  - MarvelXACT SS 254 $\mu$ m x 150mm
  - Replaces EV1029
- EV1099 Valve 6 to HP pump/HP pressure sensor
  - MarvelXACT SS 254 $\mu$ m x 250mm
  - Replaces EV1030 & EV1031



# New connectors

- The previously used UH-296 will be replaced with F-113 microferrule 1/32 with F-331 peek nut



- EV1133 Pump LP to Pressure sensor LP v2
  - Replaces EV1024
- EV1134 Pressure sensor LP to Valve 12 v2
  - Replaces EV1025