

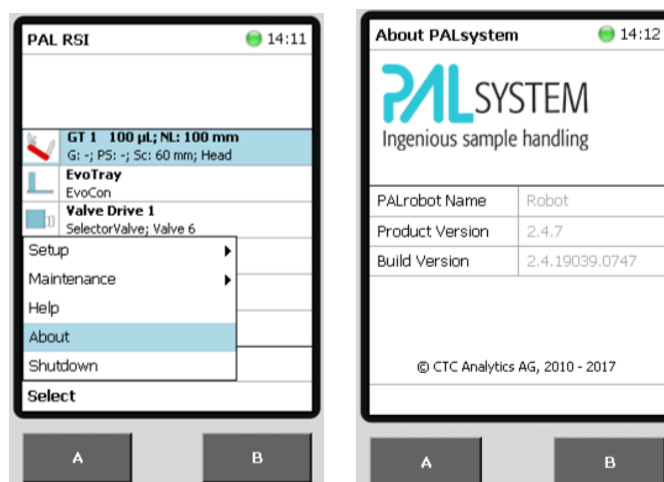
## Evosep One

### How to update autosampler firmware

#### Prerequisites

1. USB memory stick. For example the Evosep memory stick that is shipped with the Evosep One system.
  - It is mandatory, that only one partition is defined, and the file system should be FAT or FAT32.
2. Latest version of the Evosep One autosampler PAL firmware, which can be downloaded from the Evosep support zone [www.evosep.com/support/](http://www.evosep.com/support/), and has filename extension .cont or .cont3, depending on PAL operating system version.

Currently installed firmware version can be seen in the About menu on the Terminal, noted as Product Version.

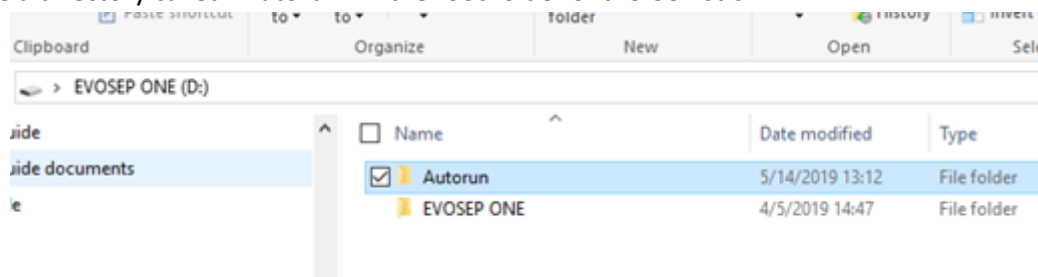


This guide is for the straightforward scenario, where only minor changes are included, meaning only the third component of the version number changed, for example when updating from version 2.4.57 to version 2.4.59.

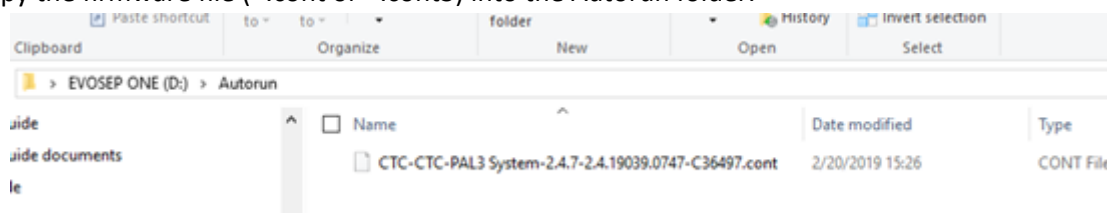
Please note, that there is some delay from turning the wheel or pressing a button on the terminal, until the action is performed – therefore, have patience when following below procedure.

## Procedure

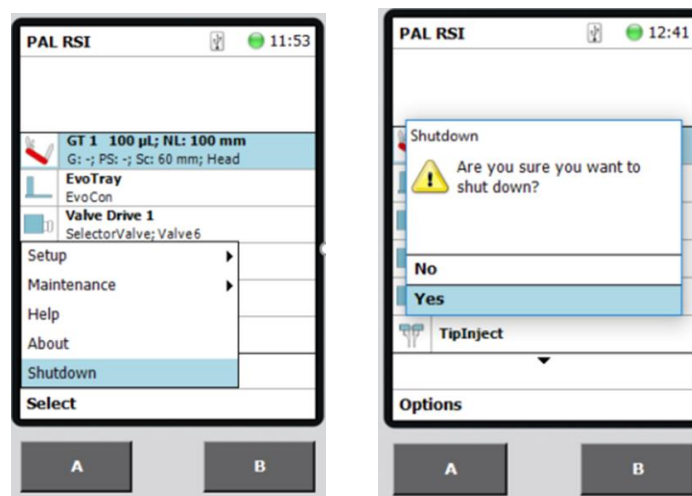
1. Create a directory called "Autorun" in the root folder of the USB stick.



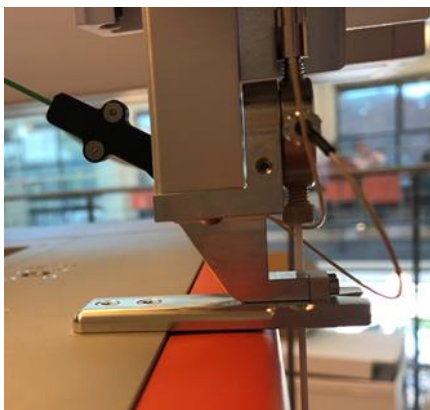
2. Copy the firmware file (\*.cont or \*.cont3) into the Autorun folder.



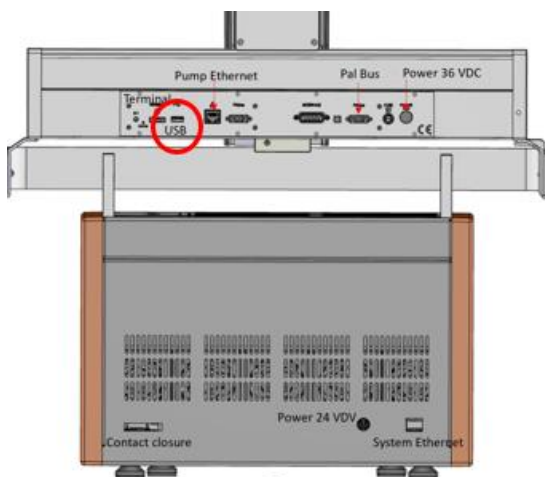
3. Check that the Evosep One is idle, then close the controlling software (Chronos, Compass HyStar).
4. From the PAL RSI window on the terminal, press the upper left button (marked as 'A' on below illustration), and choose "Shutdown" and then "Yes".



5. When the terminal window turns off, switch off the power on the autosampler power supply and wait for the Z-axis to drop into lock position.  
NOTE: Take care not to move the instrument before the needle has settled into the holder, or the needle may be damaged!

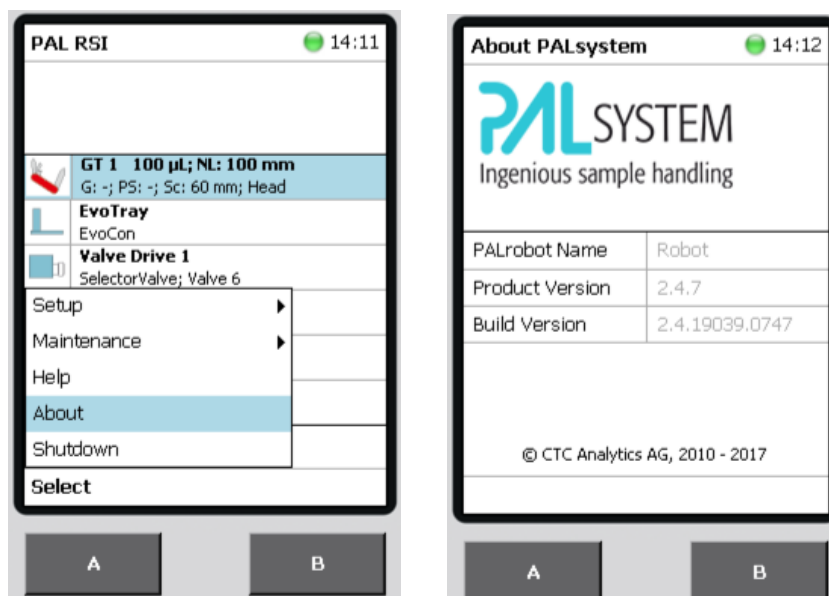


6. Insert the USB stick with the Autorun folder containing the .cont or .cont3 file into the USB connector on the backside of the autosampler X-axis.



7. Power up the autosampler.
8. With the USB stick inserted the firmware update process will be automatically started. During this process, the autosampler will reboot several times. The update will run for approximately 10-15 minutes.

9. The update process is completed when the PAL RSI window is shown on the terminal. Now go to Options>About (using the A button to choose “Options” and the wheel to scroll and click) to check that the Product version has been updated to the one expected. The image below is only for illustration and may not depict the version you installed.



10. Remove the USB stick from the autosampler and delete the Autorun folder on the stick to avoid another firmware installation, after a reboot of the autosampler.
11. On the autosampler Terminal (handhold control unit) Press A+B keys simultaneously and select “Extended user level”.



12. From the PAL RSI window, click Options>Service>Installation. With the wheel, scroll down and run "Setup Network". Enter these settings:

- DHCP: Not checked
- IP address: 172.17.17.2
- Subnet mask: 255.255.255.240
- Default gateway: 255.255.255.0



13. This concludes the firmware update.