



EVOSEP

# EVOSEP ONE

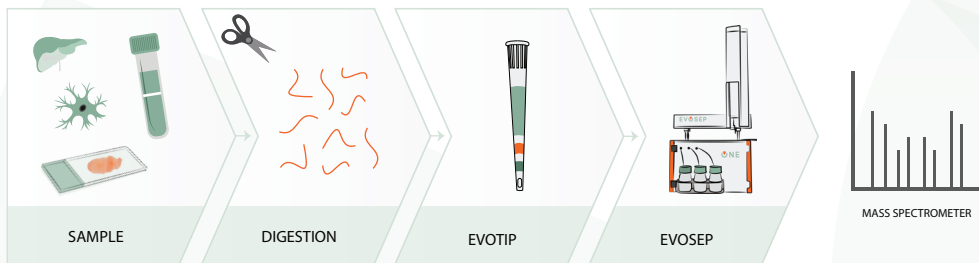
*A Standardized Separation  
Tool for Proteomics*

EVOSEP

# Next generation insights

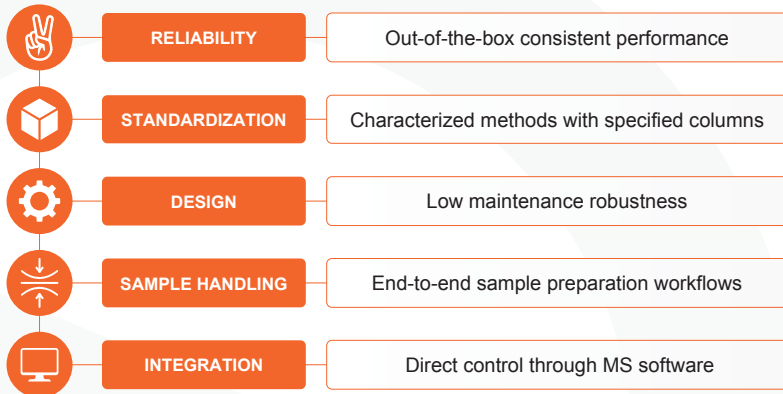
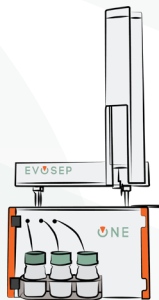
LC-MS based proteomics is not just about individual technologies. It covers the entire workflow from sample preparation to data acquisition - ensuring sensitivity, reliability, and speed.

Evosep offers a standardized yet versatile solution that streamlines and optimizes the entire workflow - not just individual performance metrics. The versatility and ease-of-use benefits any type of experiment, from multiple, smaller projects to the continuous analysis of large sample cohorts.



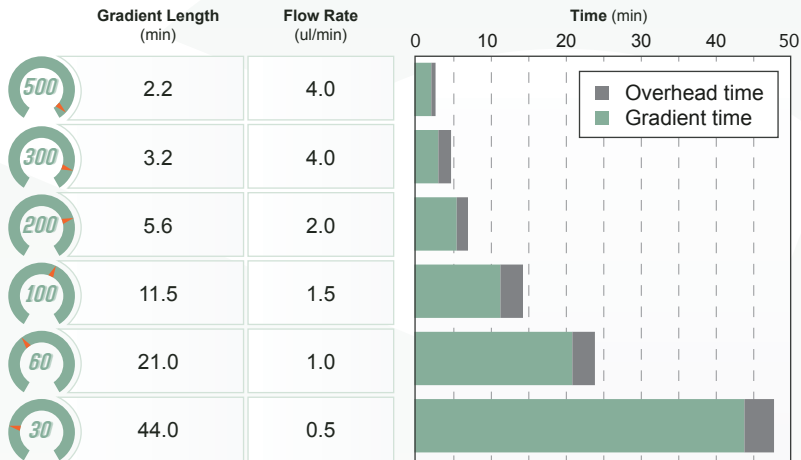
# Evosep One increases productivity

Evosep One is an easy-to-use, robust and reliable chromatographic solution for high performance and standardized proteomics, enabling seamless integration between sample preparation and LC-MS analysis in a sustainable and cost-efficient manner.

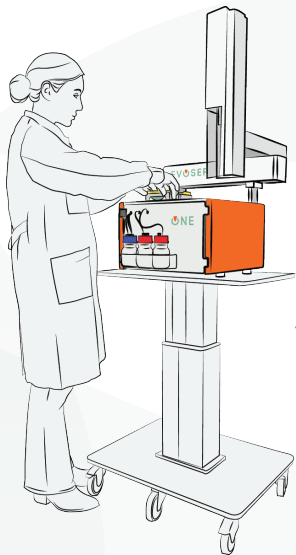


# Versatility through standardized methods

Evosep One uses optimized methods with specified columns to ensure out-of-the-box consistent performance for simplified application support. Low overhead time ensures maximum utilization of the mass spectrometer.

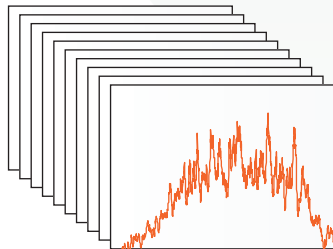


# Short learning curve and ease-of-use



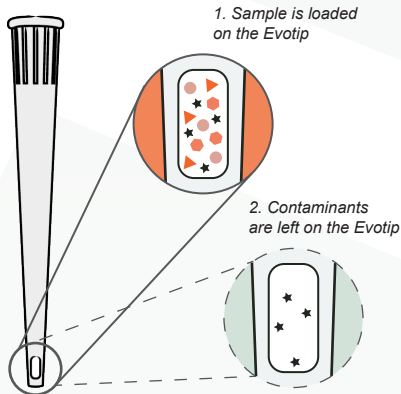
Each standardized method comes with detailed description and expected performance metrics.

You will instantly become an expert to achieve cutting-edge performance - simply follow the listed column and emitter specifications to setup the method to confirm performance and reproducibility using the individual method application notes.



# Innovative sample introduction

The Evotip is a precision technology device with extremely high efficiency, integrating desalting with LC-MS sample introduction.



## High efficiency trap column

Partial elution

Overload protection

No carryover

## Workflow functionality

Seamless integration with end-to-end workflows

Decouple sample preparation from MS availability

## Innovative sample storage

Clean-up and concentration of liquid samples

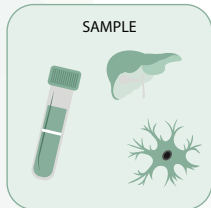
Loss-less sample recovery

Long-term stability

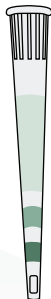
# Sustainable and scalable workflows

The Evotip is key for miniaturizing workflows by only having to digest just enough sample for a single injection, ensuring more cost-efficient and sustainable sample preparation.

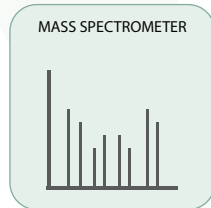
This is powered by fully automated sample loading protocols enabling immediate clean-up and efficient storage of ready-to-analyze samples.



EASY  
SUSTAINABLE  
COST-EFFICIENT



ROBUST  
SCALABLE  
CONVENIENT



# Whisper Zoom sets a new standard

Whisper™ Zoom delivers sensitivity for highly versatile applications. Robust methods enable high-throughput analysis for inter-laboratory studies, while a short learning curve facilitates rapid method adaptation.



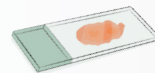
Single cell  
proteomics



Immuno-  
peptidomics



Post translational  
modifications



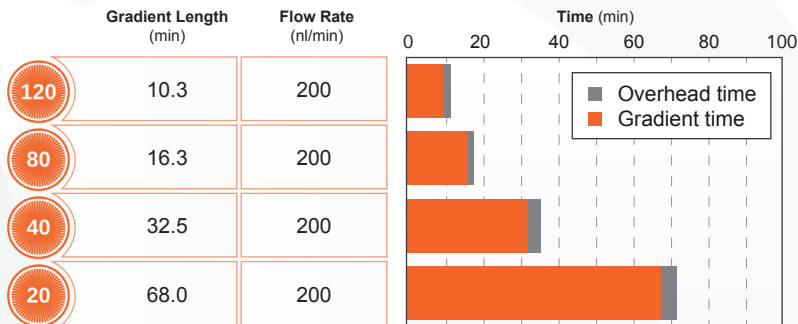
Deep visual  
proteomics



# Robust high sensitivity workflows

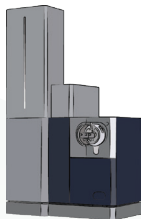
The Whisper Zoom methods deliver cutting-edge performance while addressing the increasing requirement for scalability, ease-of-use and robustness.

The methods, specifically designed for standardized and high-sensitivity applications, leverage the unique properties of the Evotip Pure to sensitive storage and efficient LC-MS sample introduction.



# Seamless integration

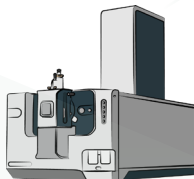
The Evosep One connects easily with leading mass spectrometers using optimized emitters and zero dead-volume connectors. Control is provided by integrated software drivers.



*Bruker*



*Thermo Scientific*



*SCIEX*



*Agilent*



# Comprehensive service coverage

Choose a tailored service plan<sup>1</sup> to meet your needs.

	Endurance Service Contract	Performance Service Contract	Excellence Service Contract
Troubleshooting wizards and online tools	<input checked="" type="checkbox"/>	<input checked="" type="checkbox"/>	<input checked="" type="checkbox"/>
Unlimited remote diagnosis and repair support	<input checked="" type="checkbox"/> Priority	<input checked="" type="checkbox"/> Priority	<input checked="" type="checkbox"/> Priority
Software and method upgrades	<input checked="" type="checkbox"/>	<input checked="" type="checkbox"/>	<input checked="" type="checkbox"/>
Spare parts coverage	<input checked="" type="checkbox"/>	<input checked="" type="checkbox"/>	<input checked="" type="checkbox"/>
Preventive maintenance (PM)	<input checked="" type="checkbox"/> 1 per year	<input checked="" type="checkbox"/> 1 per year	<input checked="" type="checkbox"/> 1 per year
Wear parts coverage		<input checked="" type="checkbox"/>	<input checked="" type="checkbox"/>
Unlimited service repair visits			<input checked="" type="checkbox"/>
Max. on-site repair response time	5 business days	3 business days	3 business days

<sup>1</sup> Terms and conditions apply

# EVUSEP

Making clinical proteomics  
100 times more robust  
and 10 times faster

*"We've got you covered, every step of the way"*



**Instrument**

**Consumables**

**Service**