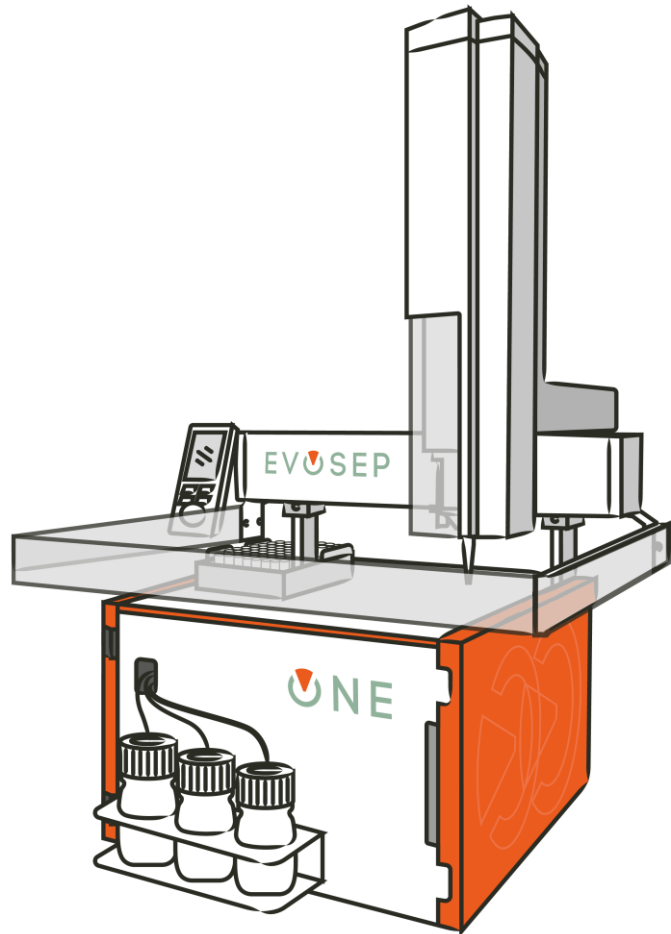


EV**SE****P**

Evosep One HW Compatibility Guide

HW Compatibility Guide



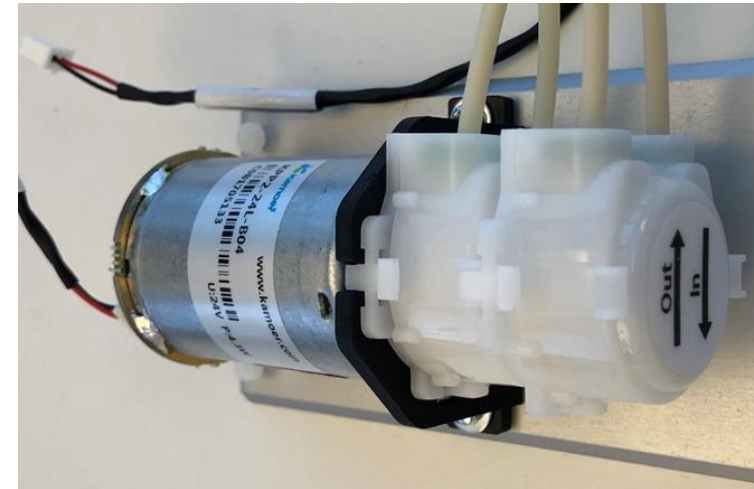
- We try very hard to limit hardware changes to the Evosep One system
- But from time to time components become obsolete or improvements become necessary
- This document will guide you to choose the correct spare parts should the need arise

Drain pump(s)

- EV1051 (2 in each system)
 - EV1041 Waste tubing
 - EV1093 Drain pump filter



- EV1097 (1 in each system)
 - EV1105 Waste tubing for peristaltic pump



Low pressure flow sensor

- EV1015, flat bottom (bigger tan/beige fittings)

- EV1023 Valve 12 to Flow-sensor LP
- EV1026 A,B flow-sensor to Needle Tee
- EV1027 C,D flow-sensor to Tip cross



- EV1100, coned bottom (smaller black fittings)

- EV1103 Valve 12 to Flow-sensor LP
- EV1101 A,B flow-sensor to Needle Tee
- EV1102 C,D flow-sensor to Tip cross



Steel tubing

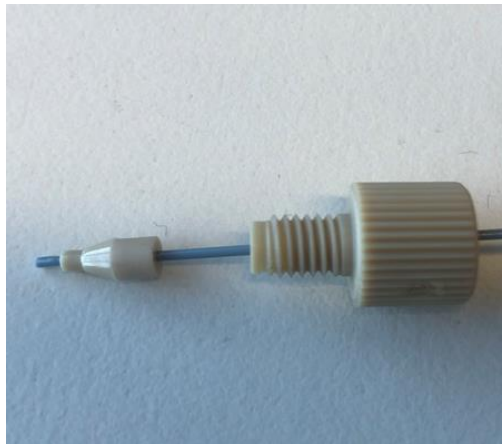
- EV1098 HP pump to HP pressure sensor
 - MarvelXACT SS 254 μ m x 150mm
 - Replaces EV1029
- EV1099 Valve 6 to HP pump/HP pressure sensor
 - MarvelXACT SS 254 μ m x 250mm
 - Replaces EV1030 & EV1031



New connectors



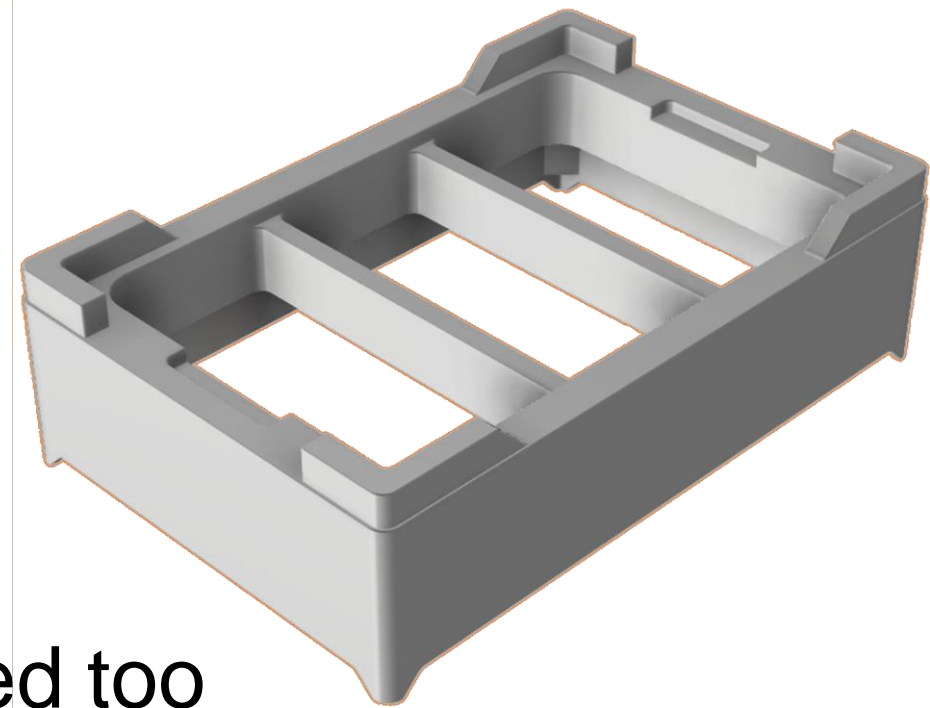
- The discontinued UH-296 replaced by F-113 microferrule 1/32 with F-331 peek nut
- Requires EV1147 Tightening tool (IDEX P-399)



- EV1133 Pump LP to Pressure sensor LP v2
 - Replaces EV1024
- EV1134 Pressure sensor LP to Valve 12 v2
 - Replaces EV1025

New Evotip adapter

- EV1153 Universal Evotip Adapter is replaced with EV1163 which has been strengthened with support ribs
- Consequently, some kits are replaced too



EV1162	Agilent AssayMAP Bravo adapters	A pair of brackets for holding Evotips and for providing an re-equilibration station	Replaces EV1142
EV1163	Evotip adapter	For automated Evotip loading on sample preparation robots.	Replaces EV1153
EV1164	Evotip loading kit (OT-2)	Adapter and tray for automatic Evotip loading on OpenTrons OT-2	Replaces EV1144
EV1165	Evotip loading kit (Bravo)	Adapter(s) and tray(s) for automatic Evotip loading on Agilent Bravo AssayMAP	Replaces EV1145
EV1166	Rack Holder w/bars	Used during Evotip loading where the rack insert can rest above a single-well plate while soaking the C18 filter membrane tips.	Replaces EV1068