

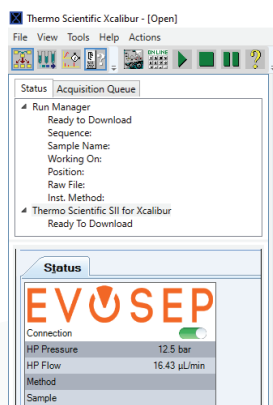
Evosep Eno Quick Start Guide for Chromeleon

1. Evosep Eno Instrument Preparation with Chromeleon

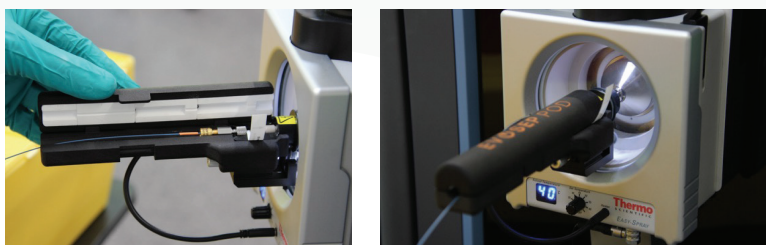
- a. Check Evosep solvent levels, Waste, Solvent A, Solvent B. (left picture) Check LEDs for power on pumps (middle) and autosampler (right picture).



- b. Open Xcalibur and click "Thermo Scientific SII for Xcalibur". Check that the connection button in the Evosep status tab is green.



- c. Check that column and emitter are connected, that the emitter is positioned in front of MS orifice and that 40 °C heat is applied to the column. If not, connect column and emitter and schedule and run the "Flow to column" script to check spray.

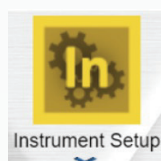


2. Evosep Eno Sample Acquisition with Chromeleon

- a. Make sure that Instrument Preparation has been performed.
- b. Prepare samples according to SOP for sample loading. Remove lid from Evtip box and place it in Slot 1.



- c. In Xcalibur click the "Instrument Setup".



- d. Select Thermo Scientific SII and then click next.



- e. Select line and drag down to user specified Evosep Eno method and make a note of the Runtime value.

Name	100 SPD
Description	12.7 min acquisition time. Compatible columns: EV1109 at 40°C
Runtime	12.7 min

- f. Select the MS tab to begin setting MS parameters. Note that the MS Method length should match the Evosep Eno method Runtime in both Method Duration and Time range in “Scan Parameters”.



- g. Then return to Thermo Scientific SII and click “Next” and then “Finish” to complete method setup. Then save the Inst method.

- h. Return to Xcalibur and select “Sequence Setup”.



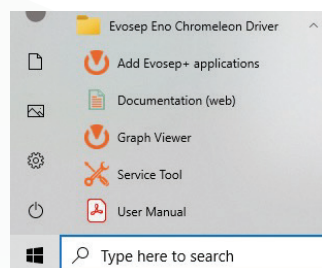
- i. In the sequence table populate: “File Name”, “Path”, “Instrument meth” and “Position” etc.

Sample Type	File Name	Sample ID	Path	Inst Meth	Proc Meth	Position	Inj Vol	Level
1	Unknown	data01	1	C:\Xcalibur\Dat	samples per day	S1.A1	0.00	

- j. Go to the “toolbar” and click the “Play” button to start the acquisition, make sure the Evosep One and MS are ready before starting.



- k. You can check the Evosep Eno’s status in the status tab window. To see the graph data of the Evosep Eno please click on the Evosep Eno GraphViewer application from Windows start menu.



Evosep disclaimer applies, see Evosep Eno User Manual and User Guides for more detail

UM-013A