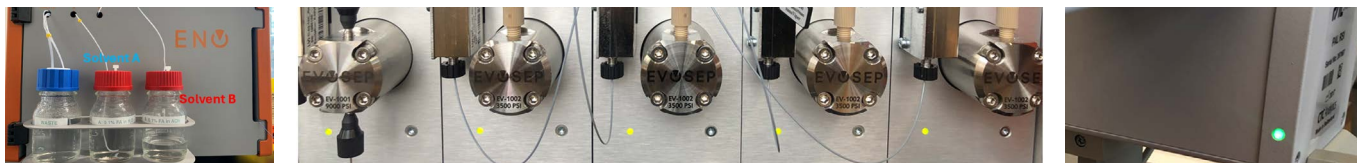


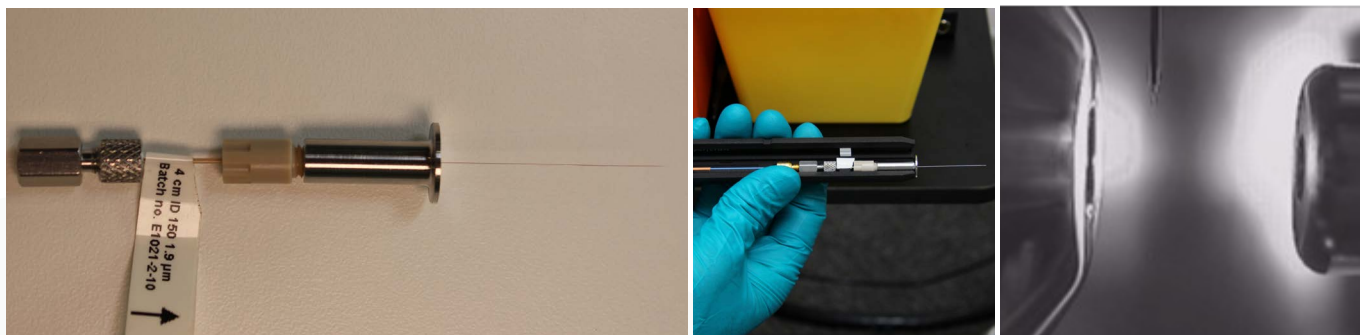
# Evosep Eno Quick Start Guide for MassHunter

## 1. Instrument Preparation with MassHunter

- a. Check Evosep solvent levels, Waste, Solvent A, Solvent B (left picture). Check LEDs for power on pumps (middle) and autosampler (right picture).



- b. Open Data Acquisition. Check that Evosep and MS are configured and ready in Instrument Status.
- c. Assemble the column and emitter as shown and connect the transfer line from Evosep to the column. This assembly is to be placed in the column oven (Evosep Pod for Agilent Nanospray) so that 40 oC heat is applied to the column. Close the Evosep Pod and insert this into the Nanospray source and check position of the emitter.

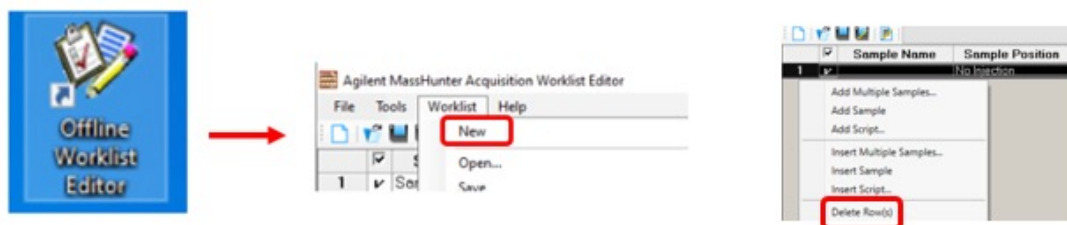


## 2. Sample Acquisition with MassHunter

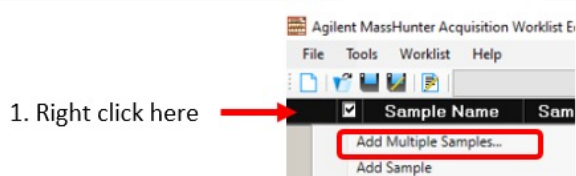
- a. Make sure that Instrument Preparation has been performed.
- b. Prepare samples according to SOP for sample loading. Remove lid from Evtip box and place it in Slot 1.



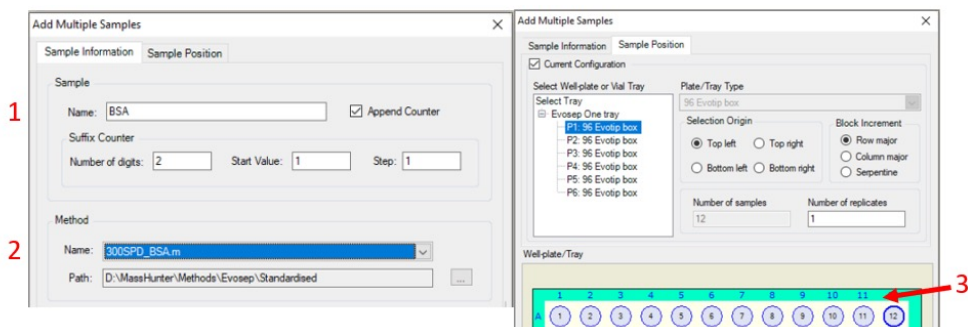
- c. In MassHunter Acquisition Worklist Editor click on the "Worklist" pane and select "New". Delete first row.



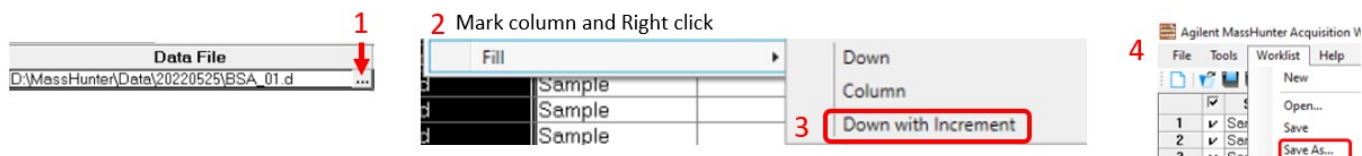
- d. Right click and select "Add Multiple Samples".



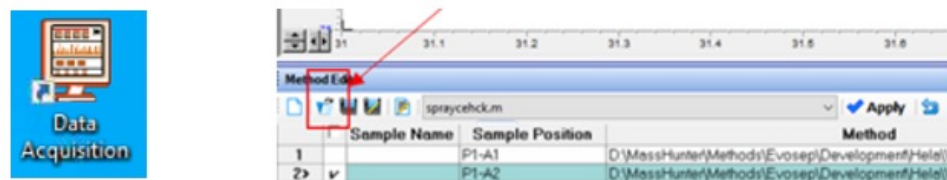
- e. Enter Sample Name (1) and choose method (2). Select sample positions (3). Click “OK”.



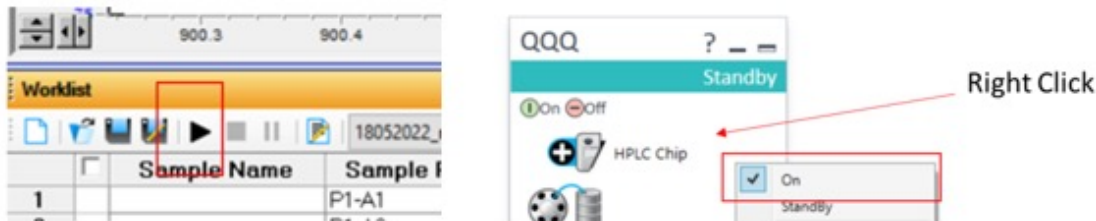
- f. Create Data File folder and enter file name for first sample (1). Mark “Data File” column (2), right click and select “Fill”. Choose “Down with Increment” (3). Save Worklist (4).



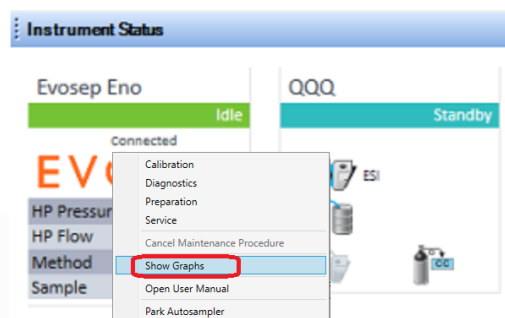
- g. Upload Worklist in MassHunter Data Acquisition.



- h. Please note the MS must be “On” to launch a run.



- i. After a short while Evosep One status will change from “Idle” to “Prerun” to “Injecting” and to “Run” when the gradient starts. More information during the run can be found by clicking the Evosep Eno link to open the status window. Right click and select “Graph Views” to open the run in the Graph Viewer. Right click and select to initiate Calibration, Diagnostic tests etc.



Evosep disclaimer applies, see Evosep Eno User Manual and User Guides for more detail

UM-015B